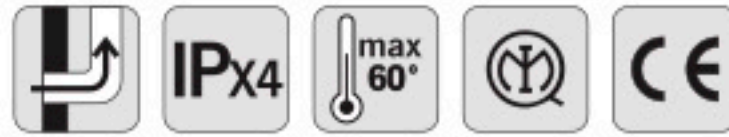




# AXC

## Centrifugal in-line duct fans Metal Version



### PERFORMANCES

MODELS	m <sup>3</sup> /h	l/s	Pa	W	A	dB(A)*
AXC 100 A	237	66	279	27	0,13	30
AXC 100 B	260	72	383	50	0,23	36
AXC 125 A	287	80	238	27	0,13	32
AXC 125 B	313	87	345	50	0,23	36
AXC 150 A	337	94	189	29	0,14	33
AXC 150 B	537	149	406	80	0,37	39
AXC 160 A	365	101	203	29	0,14	31
AXC 160 B	754	209	476	110	0,50	38
AXC 200	887	246	460	110	0,50	34
AXC 250	1114	309	543	150	0,65	43
AXC 315	1439	400	742	260	1,14	43
AXC 355 A **	2200	611	349	240	1,12	57
AXC 355 B **	2350	653	902	650	2,82	77

\*LpA measured at 3m in open field 230V-50Hz. \*\*Available for extra UE markets only without CE marking.

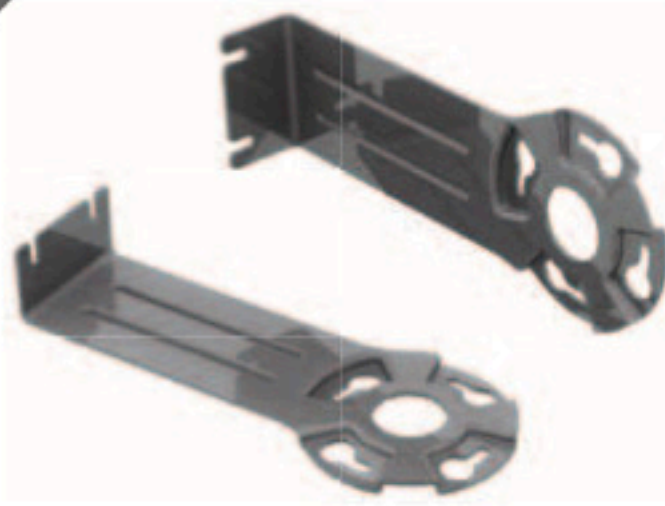


Comply with ErP Directive 2009/125/CE and UE Regulation 1253/2014. Residential Ventilation Unit.

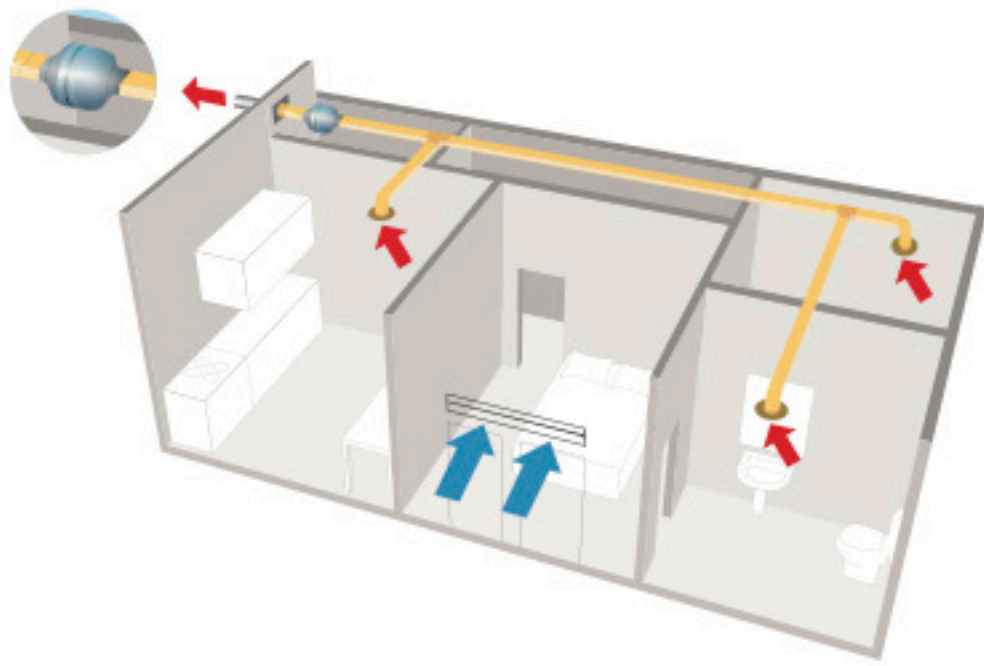
- High performance centrifugal fans for in-line duct installation.
- Easy and cost-effective solution for a centralized ventilation requirement.
- 11 models Ø100 to 315 mm.
- Steel housing with epoxy finish inside and outside.
- Ball-bearing motor. Backward curved blades.

#### SUPPLIED

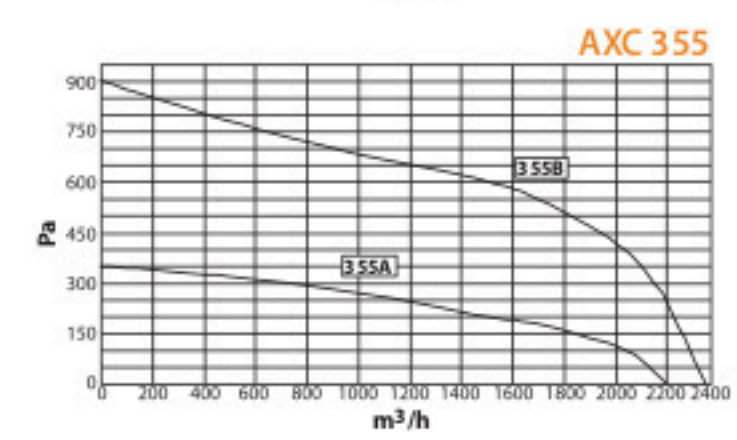
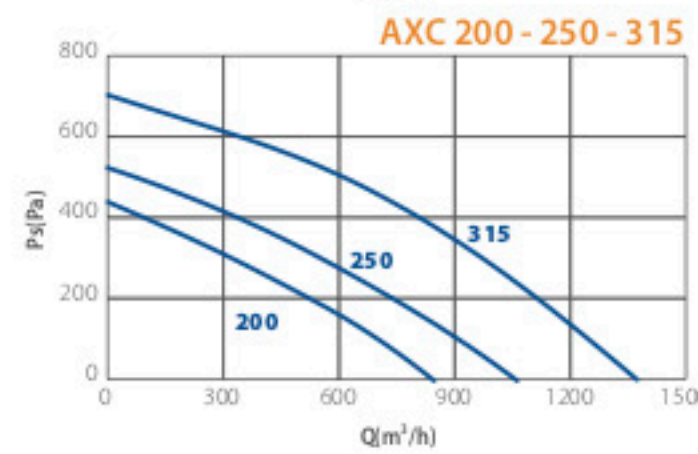
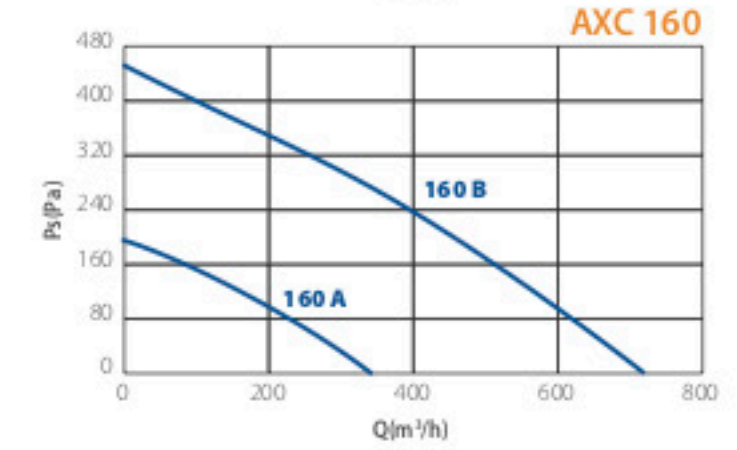
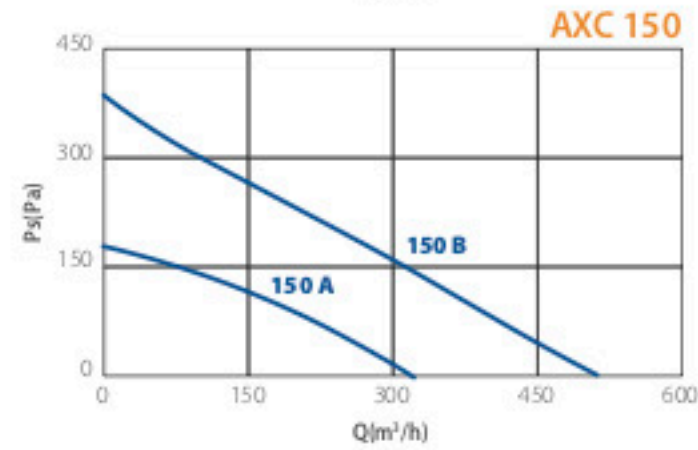
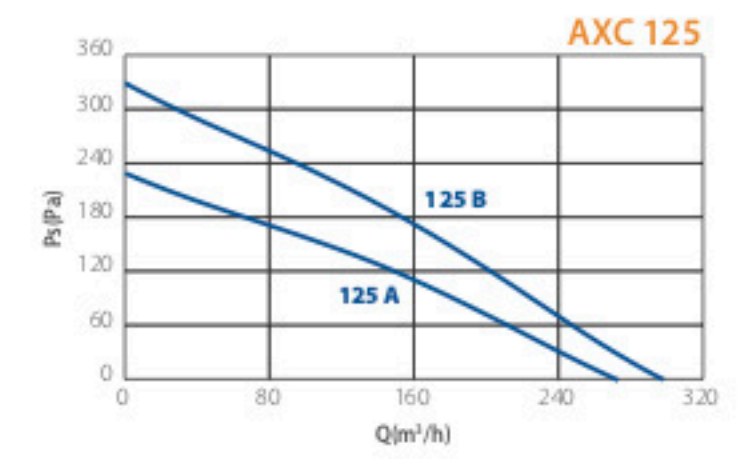
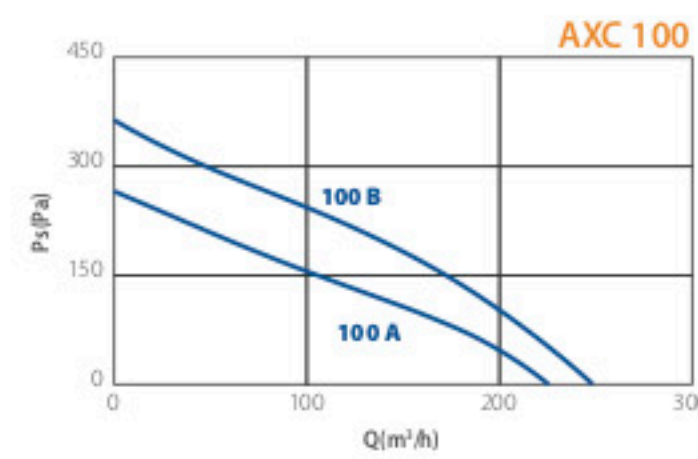
Wall fixing brackets.



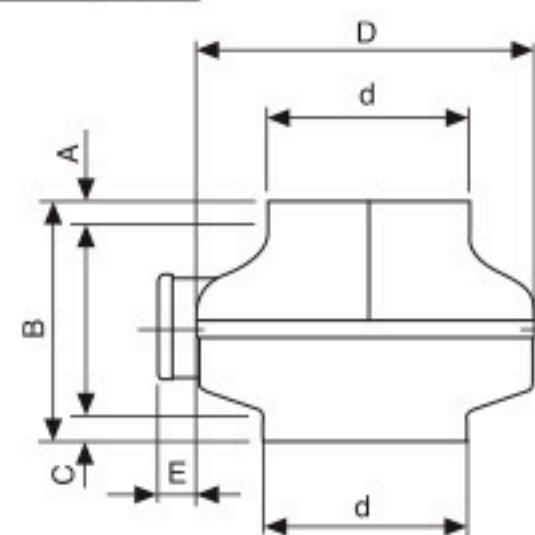
#### INSTALLATION



### CURVES



### DIMENSIONS



MODELS	A	B	C	ØD	Ød	E	Kg
AXC 100 A	12	215	24	245	98	38	3
AXC 100 B	12	215	24	245	98	38	3
AXC 125 A	11	214	24	245	122	38	3
AXC 125 B	11	214	24	245	122	38	3
AXC 150 A	21	216	23	245	147	38	3
AXC 150 B	22	230	22	333	148	38	5
AXC 160 A	24	215	24	245	157	38	3
AXC 160 B	21	230	22	333	158	38	5
AXC 200	22	230	27	333	198	38	5
AXC 250	22	230	35	333	248	38	5
AXC 315	30	297	52	404	314	38	8
AXC 355 A	44	400	50	484	355	38	12
AXC 355 B	44	400	50	484	355	38	14

### INSTALLATION

